



**H*i*** **Hidrorubber**  
*your flexible partner*

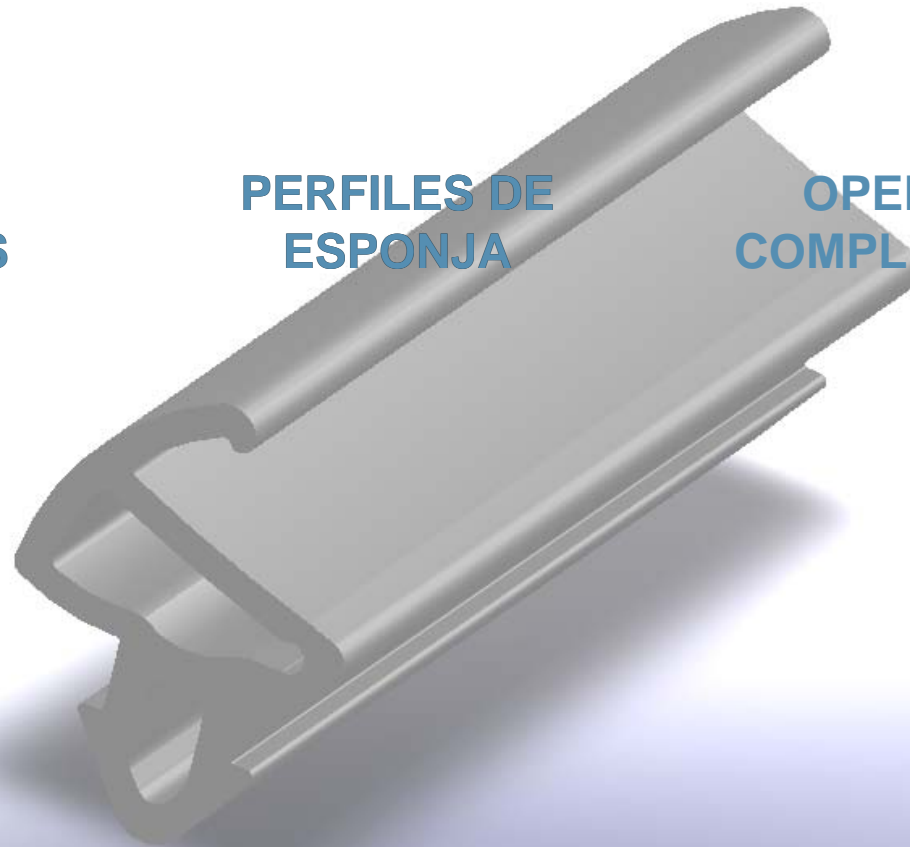
# CATALOGO DE EXTRUSIÓN



**PERFILES  
COMPACTOS**

**PERFILES DE  
ESPONJA**

**OPERACIONES  
COMPLEMENTARIAS**





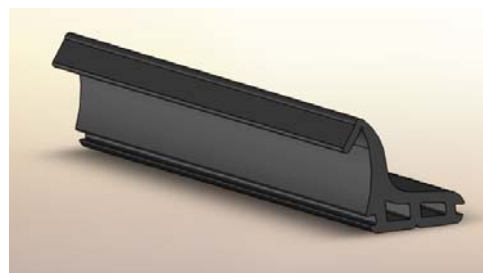
**LÍNEA  
BLANCA**



**AUTOMOCIÓN**



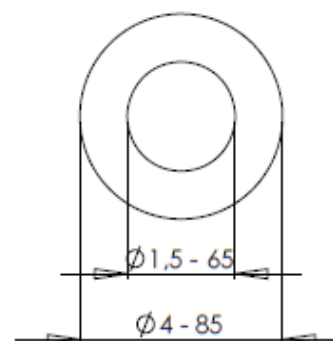
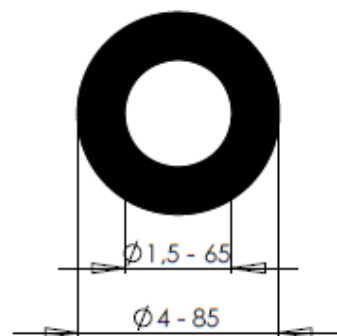
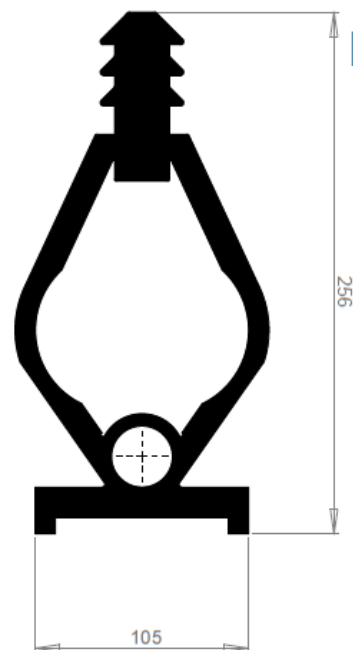
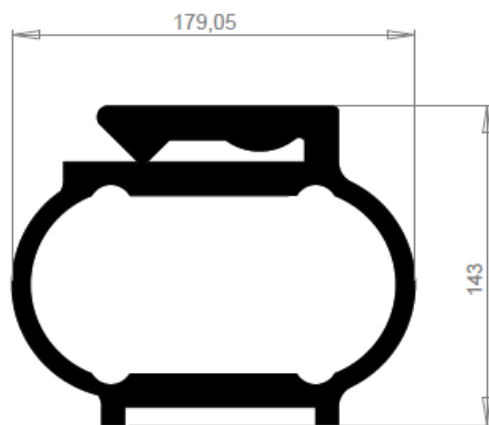
**ENERGIA SOLAR**

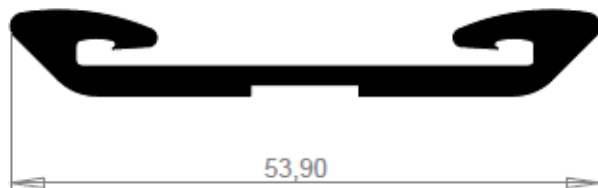
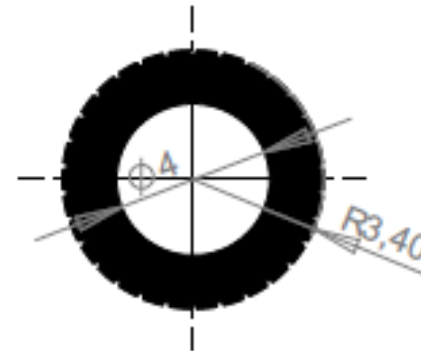
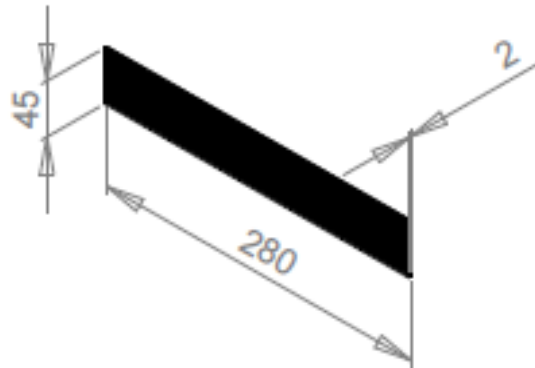


**CONSTRUCCIÓN**

**MATERIALES: EPDM / SILICONA**

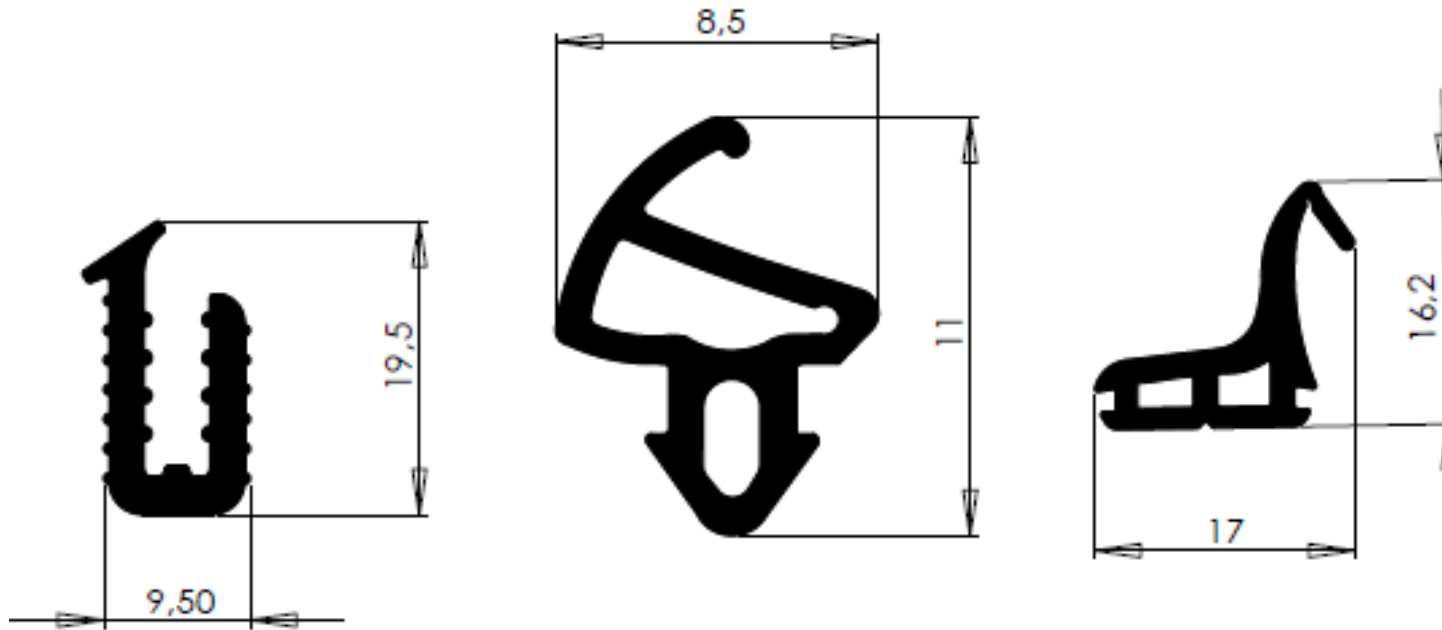
**DUREZA: 40 – 85 Sh A**





**MATERIALES: EPDM / CR / SILICONA / NBR**

**DUREZA: 40 – 85 Sh A**



**MATERIALES: EPDM / CR / SILICONA / NBR**

**DUREZA: 40 – 85 Sh A**



**LINEA  
BLANCA**



**AUTOMOCIÓN**



**ENERGIA SOLAR**

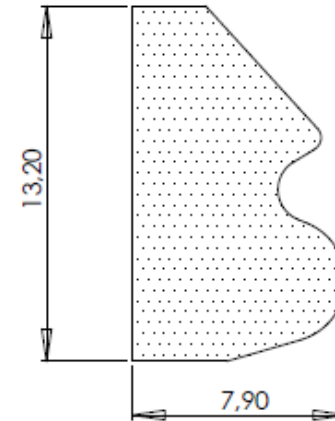


**NAVAL Y  
FERROVIARIA**



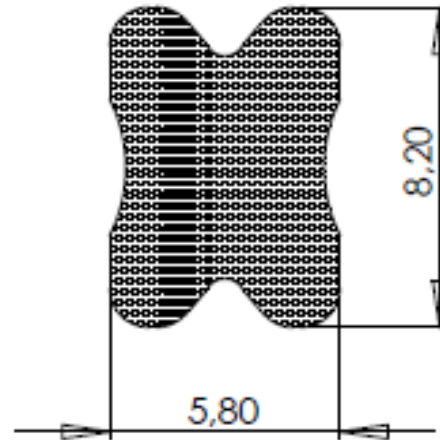
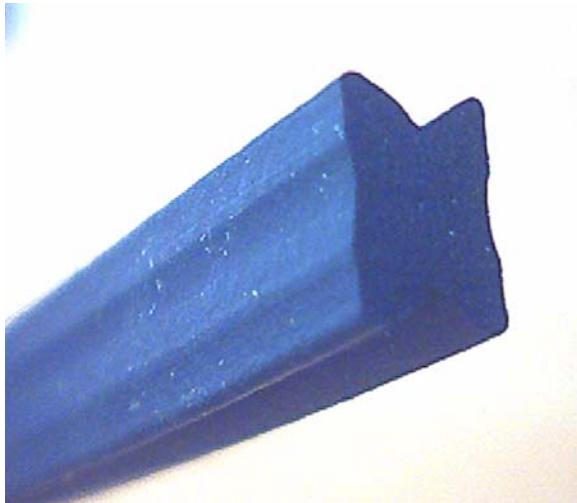
**JUNTAS DE GRANDES  
DIMENSIONES**





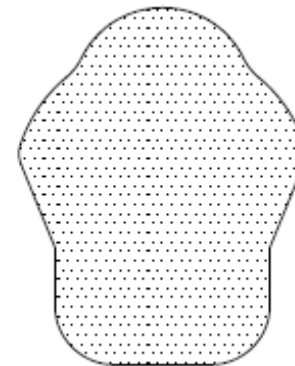
**MATERIALES: EPDM ESPONJOSO**

**DENSIDAD: 0.40 g/cm<sup>3</sup>**



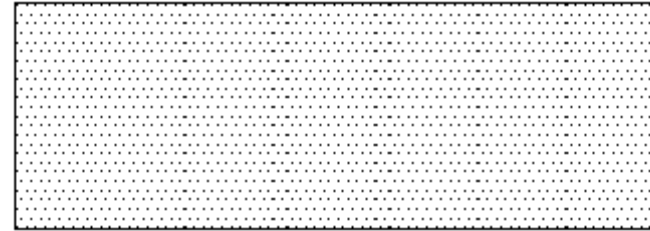
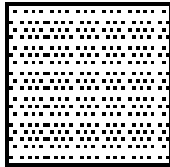
**MATERIALES: CR ESPONJOSO**

**DENSIDAD: 0.55 g/cm<sup>3</sup>**



**MATERIALES: EPDM ESPONJOSO**

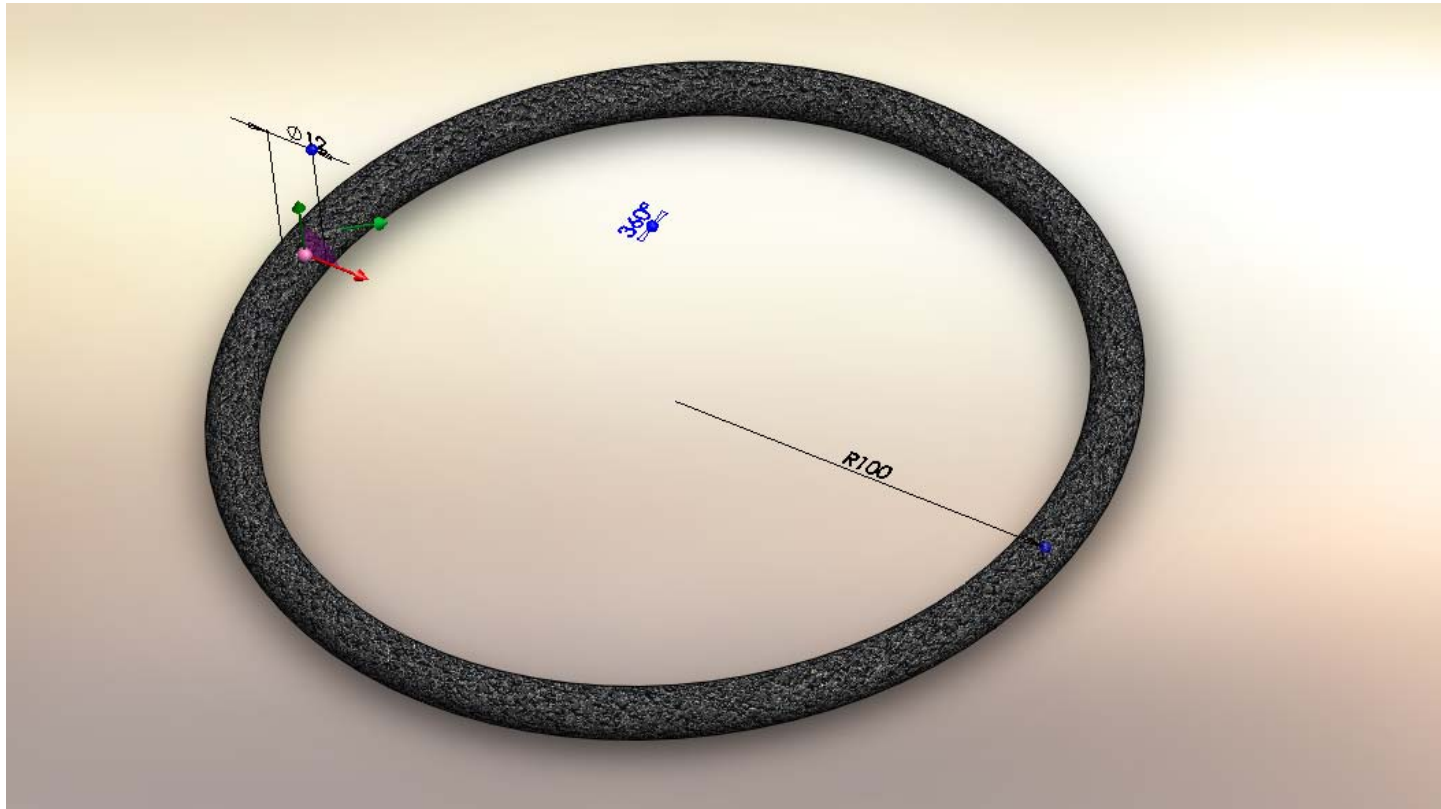
**DENSIDAD: 0.40 g/cm<sup>3</sup>**



**PERFILES CUADRADOS DE DIVERSAS  
DIMENSIONES**

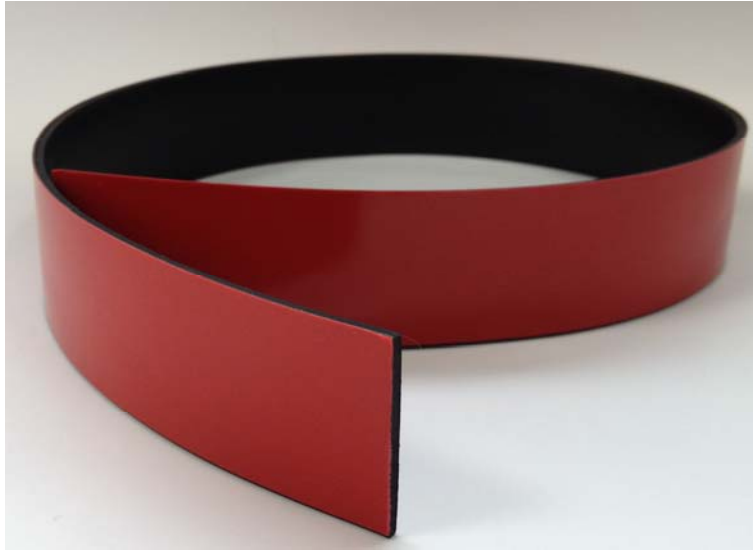
**MATERIALES: EPDM ESPONJOSO**

**DENSIDAD: 0.40 g/cm<sup>3</sup> O 0.60 g/cm<sup>3</sup>**



**MATERIALES: EPDM ESPONJOSO  
(ALIMENTICIO)**

**DENSIDAD: 0.40 g/cm<sup>3</sup>**



**PERFILES CON  
ADHESIVO DOBLE  
CARA**



**UTILIZAMOS PERFILES CON  
FIELTROS DE ALTA RESISTENCIA  
A LA ABRASION**

## MAQUINAS CORTADORAS



## PIEZAS CORTADAS





EN CARRETES



EN MADEJAS



TAMBIEN EN...



EN MAZOS

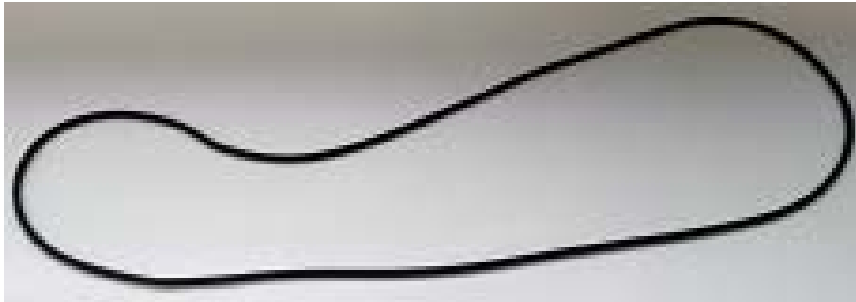


O TROQUELADAS

GRAPADAS



PEGADAS



PINTADAS

